



BRUSH PUPPIES

Ahoyt Family Dental

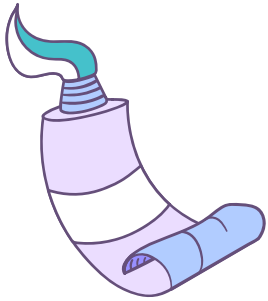
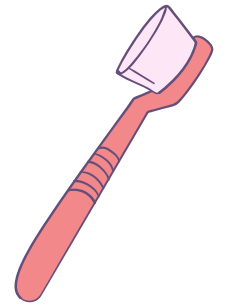
# Missing Letters

Use the letter bank below to help Bear figure out the missing letters from these dental items.



F \_ O \_ S

T O \_ \_ H B \_ U \_ H



\_ O \_ T \_ P \_ S T \_

\_ O \_ T H \_ A S \_



Letter Bank: Use each letter once.

H S T O S A H R  
W T O L U M E

Answer Key: Floss, Toothbrush, Toothpaste, Mouthwash